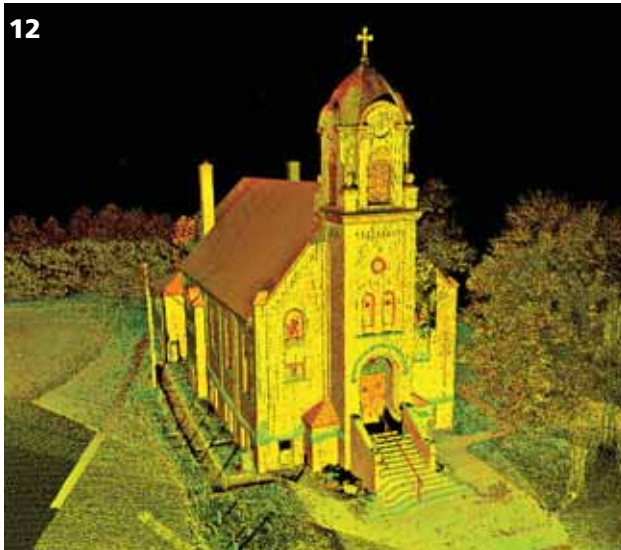


cadalyst contents

Winter/Spring 2011 www.cadalyst.com



features

- 9** **techtrends** By Melanie Perry
iPads Change the Game for Construction
Tablet computers make it easy for one design–build firm to share design renderings with clients and access building data on the fly.
- 12** **cadalystlabsreport** By Susan Smith
3D Scanning Is Flying High
Faster, more accurate, more affordable technologies are propelling laser scanning applications to the forefront of AEC, civil engineering, and manufacturing.

cadalystlabsreviews

- 19** **firstlook** By Bill Fane
AutoCAD 2012: Who Says 2D Is Dead?
The majority of the latest enhancements beef up 2D functionality, including two new commands for generating 2D working drawings from 3D models.
- 21** **firstlook** By Patrick Davis
CadFaster | Collaborate for Autodesk Revit 2011
Share designs interactively and in real time with this easy-to-use, web-based software.
- 23** **firstlook** By Ron LaFon
Eurocom Panther 2.0 Mobile Workstation
Portable workstation offers good performance and excellent connectivity and storage options.

columns

- 25** **viewpoint** By Curt Moreno
I Am Drafter!
Drafting, and those who practice the craft, should be recognized for their vital role in the design process.
- 27** **cadmanager** By Robert Green
Show Me the Money
Having trouble getting upper management's support for training and efficiency upgrades? Show your potential savings in dollars and get what you need.
- 28** **circlesandlines** By Lynn Allen
A Perfect View
Finally, users get Transparency tools to control how objects and layers display in AutoCAD.
- 30** **userprofile** By Cyrena Respini-Irwin
Dale Maloney: Rendering Powerhouse
Preconstruction designer at Novum Structures gives architects a window on the future.

departments

- 4** editor'swindow
- 7** cadcartoon
- 7** cadcentral
- 8** hottipharry

On the cover: High-definition laser scanning enables architects to work with more accurate as-built data. This point cloud of a church will become the basis of a building information model. (Image courtesy of IMAGINiT Technologies.)

Cover art direction: Gwen Thomsen Rhoads